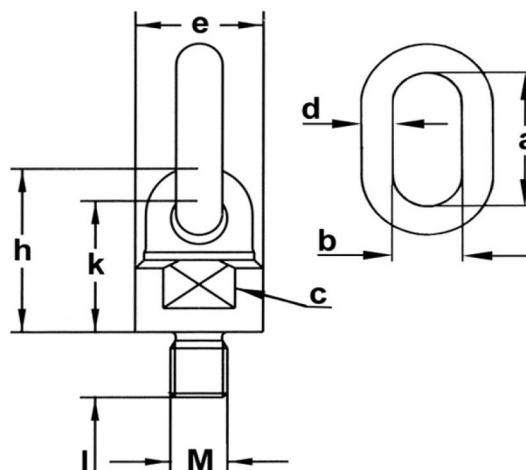


Swivel attachment alloy steel Swi PIN metric coarse thread (fine thread, inch thread and others available upon demand)



* Reference standard	Industrial standard
* Type of steel	Alloy steel 35CrMo Aisi 4135 - W.N. 1.7220
* Design factor (F.O.S.)	4 : 1
* Standard surface finish	Blue painted
* Technical features	High working load limit - horizontal swivelling 360°, vertical swivelling 180° - the ring follows the pull direction - may rotate under load.
* Applications	Industrial and marine load handling when high load and rotation of attachment are requested
* Warnings	Unfit to continuing rotation under load - working temperature -20° to +200° C - please refer to the technical part of attachment section for deepening and warnings

size	code	thread		length l - mm	pitch mm	WLL t ⁽¹⁾		Max. tightening torque Nm	measures mm						approx. weight per pc. kg							
		M (2)	inch (2)			along the axe	at 90°		dia. e	height h	key c	height k	d	link a		b						
1	GLSLR08013	8	-	13	1,25	0,6	0,3	10	36	52	30	43	13	50	30	0,41						
	GLSLR10018	10	-	18	1,5	0,9	0,45	16								0,43						
	GLSLR12018	12	-	18	1,75	1	0,5	28								0,44						
	GLSLR14020	14	-	20	2	2	1,12	45								0,45						
	GLSLR16020	16	-	20	2	2	1,12	70								0,46						
	K-GLSLR16120G	20	3/4	115⁽²⁾	depending on thread											0,64						
2	GLSLR20030	20	-	30	2,5	4	2	135	49,5	68	42	56	16	70	35	0,96						
	K-GLSLR20120G	24	7/8	120⁽²⁾	depending on thread																	1,17
3	GLSLR24030	24	-	30	3	6,3	3,15	230	57	80	46	68,5	18	83	40	1,45						
	GLSLR27035	27	-	35	3	6,3	3,15	343								1,47						
	K-GLSLR24120G	30	1.1/8	120⁽²⁾	depending on thread																	
4	GLSLR30035-5T	30	-	35	3,5	10,6	5,3	465	66	97	55	82	20	84	40	2,17						
5	GLSLR30035-8T	30	-	35	3,5	11,8	8	465	80	112	65	92	22	115	50	3,57						
	K-GLSLR30120-8TG	36	1.3/8	120⁽²⁾	depending on thread																	4,01
6	GLSLR36050	36	-	50	4	11,8	8	814	80	112	65	92	22	115	50	3,6						
	K-GLSLR36120G	42	1.5/8	120⁽²⁾	depending on thread																	4,17
	GLSLR42050	42	-	50	4,5	15	10	1304								3,95						
	GLSLR48050	48	-	50	5	15	10	1981					4,02									
	K-GLSLR48110G	56	2.1/4	110⁽²⁾	depending on thread												25			4,8		
	K-GLSLR48210G			210⁽²⁾																8,57		
7	GLSLR56084	56	-	84	5,5	30	15	3000	118	165	96	142	32	147	70	11,8						
	GLSLR64095	64	-	95	6	30	15	4738								12,5						
	K-GLSLR64095G	72	3	95⁽²⁾	depending on thread																	12,7

⁽¹⁾ metric tons of 1.000 kg ⁽²⁾ in red codes (blank attachments) the thread and length shown are the maximum deliverable

In bold characters the WLL marked on attachments (at 90°) - the codes in bold character are stock-items.

The codes in red are in stock blank (un-machined); they can be supplied with length upon demand, completely or partially threaded, with fine thread, inch Whitworth, UNC or UNF thread, or with non-standard thread.

In these codes the WLL and tightening torque depend on thread.