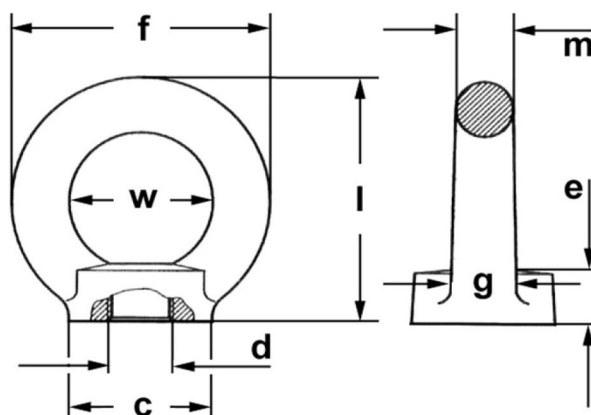


## Alloy eyenut Fix PIN F ISO metric thread coarse - art. 5850



* Reference standard	Industrial standard
* Type of steel	Alloy steel 35CrMo Aisi 4135 (W.N. 1.7220) - quenched and tempered
* Design factor	4 : 1
* Standard surface	Yellow electro galva
* Applications	Lifting and handling of loads in industry and marine, when high WLLs are requested
* Warnings	Working temperature -20° +200° C - please refer to the technical part of eyebolt/eyenut section for deepening and other warnings.

Dimensional tolerances  
eye inside width w +/- 1 mm

### Technical data

code	WLL t <sup>(1)</sup>		thread		tightening torque Nm	measures mm						approx. weight per pc. kg	
	along the axe	at 45° <sup>(2)</sup>	mm	pitch		width w	width f	dia. c	thickness e	m	dia. g		height l
<b>GLFIXF080</b>	1	0,7	8	1,25	8	20	36	20	6	8	10	36	0,05
<b>GLFIXF100</b>	1	0,7	10	1,5	16	25	45	25	8	10	12	45	0,09
<b>GLFIXF120</b>	2	1,4	12	1,75	28	30	54	30	10	12	14	53	0,16
<b>GLFIXF160</b>	4	2,8	16	2	70	35	63	35	12	14	16	62	0,24
<b>GLFIXF200</b>	6	4,2	20	2,5	135	40	72	40	14	16	19	71	0,36
<b>GLFIXF240</b>	8	5,6	24	3	230	50	90	50	18	20	24	90	0,72
<b>GLFIXF300</b>	12	8,4	30	3,5	465	60	108	60	22	24	28	109	1,32
<b>GLFIXF360</b>	16	11,2	36	4	814	70	126	70	26	28	32	128	2,08
<b>GLFIXF420</b>	24	16,8	42	4,5	1304	42	144	80	30	32	38	147	3,11
<b>GLFIXF480</b>	32	22,4	48	5	1981	48	166	90	35	38	46	168	5,02

<sup>(1)</sup> metric tons of 1.000 kg

The sizes in bold character are stock-items.

<sup>(2)</sup> maximum side load. **WARNING: side load is permitted only along eye's plan**