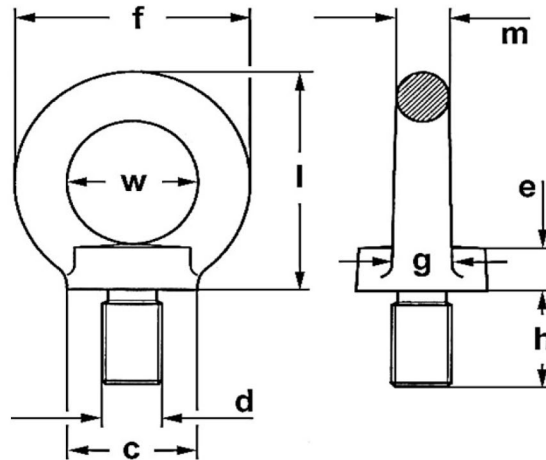


Alloy eyebolt Fix PIN, various threads - art. 5800



* Reference standard	Industrial standard
* Type of steel	Alloy steel 35CrMo Aisi 4135 (W.N. 1.7220) - quenched and tempered
* Design factor	4 : 1
* Standard surface	Yellow electro galva (lower part of base and thread of red codes: selfcoloured)
* Applications	Lifting and handling of loads in industry and marine, when high WLLs are requested
* Warnings	Working temperature -20° +200° C - please refer to the technical part of eyebolt/eyenut section for deepening and other warnings.

Dimensional tolerances
eye inside width w +/- 1 mm

Technical data																	
code	thread		length h mm		WLL t ⁽¹⁾		pitch		tightening torque Nm	measures mm							approx. weight per pc. kg
	d	maximum obtainable	standard	max.	along the axe	at 90° ⁽²⁾	mm	type		width	dia.	thickness	dia.	height			
									w	f	c	e	m	g	l		
GLFIX0080	8	-	13	-	1	0,375	1,25	coarse	8	20	36	20	6	8	10	36	0,06
GLFIX0100	10	-	17	-	1	0,375	1,5	coarse	16	25	45	25	8	10	12	45	0,11
GLFIX0120	12	-	21	-	2	0,75	1,75	coarse	28	30	54	30	10	12	14	53	0,17
K-GLFIX012G	-	M12 - 1/2"	-	21	-	depending on machining			-	30	54	30	10	12	14	53	0,19
GLFIX0140	14	-	21	-	4	1,5	2	coarse	45	30	54	30	10	12	14	53	0,17
GLFIX0160	16	-	27	-	4	1,5	2	coarse	70	35	63	35	12	14	16	62	0,31
K-GLFIX016G	-	M 16 - 5/8"	-	27	-	depending on machining			-	35	63	35	12	14	16	62	0,33
GLFIX0180	18	-	27	-	5	1,88	2,5	coarse	95	35	63	35	12	14	16	62	0,31
GLFIX0200	20	-	30	-	6	2,25	2,5	coarse	135	40	72	40	14	16	19	71	0,48
K-GLFIX020G	-	M 20 - 3/4"	-	30	-	depending on machining			-	40	72	40	14	16	19	71	0,52
GLFIX0220	22	-	36	-	7	2,63	2,5	coarse	182	40	72	40	14	16	19	71	0,48
GLFIX0240	24	-	36	-	8	3	3	coarse	230	50	90	50	18	20	24	90	0,9
K-GLFIX024G	-	M 24 - 7/8"	-	36	-	depending on machining			-	50	90	50	18	20	24	90	1
GLFIX0270	27	-	-	45	10	3,75	3	coarse	343	60	108	65	24	24	28	109	1,7
GLFIX0300	30	-	45	-	12	4,5	3,5	coarse	465	60	108	65	24	24	28	109	1,7
K-GLFIX030G	-	M 33 - 1.1/4"	45	-	-	depending on machining			-	60	108	65	24	24	28	109	1,9
GLFIX0360	36	-	54	-	16	6	4	coarse	814	70	126	75	26	28	32	128	2,15
GLFIX036x3	36	-	54	-	16	6	3	fine	814	70	126	75	26	28	32	128	2,15
K-GLFIX036G	-	M 36 - 1.3/8"	-	54	-	depending on machining			-	70	126	75	26	28	32	128	2,35
GLFIX042	42	-	63	-	24	9	4,5	coarse	1304	80	144	85	30	32	38	147	4,15
GLFIX042x3	42	-	63	-	24	9	3	fine	1304	80	144	85	30	32	38	147	4,15
K-GLFIX042G	-	M 45 - 1.3/4"	-	63	-	depending on machining			-	80	144	85	30	32	38	147	4,35
GLFIX0480	48	-	68	-	32	12	5	coarse	1981	90	166	100	35	38	46	168	6,2
GLFIX048x3	48	-	68	-	32	12	3	fine	1981	90	166	100	35	38	46	168	6,2
K-GLFIX048G	-	M 48 - 1.7/8"	-	68	-	depending on machining			-	90	166	100	35	38	46	168	6,8
K-GLFIX052G	-	M 52 - 2"	-	68	-	depending on machining			-	90	166	100	35	38	46	168	6,8
K-GLFIX056G	-	M 56 - 2.1/4"	-	70	-	depending on machining			-	100	184	110	38	42	50	187	9
K-GLFIX064G	-	M 64 - 2.1/2"	-	78	-	depending on machining			-	110	206	120	42	48	55	208	12,7

⁽¹⁾ metric tons of 1.000 kg

The sizes in bold character are stock-items.

⁽²⁾ maximum side load. WARNING: side load is permitted only along eye's plan

The red codes are in stock blank. They can be threaded fine and very fine ISO metric thread, UNC, UNF, Whitworth, or else. For such codes WLL and tightening torque vary depending on machining.