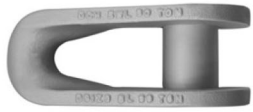
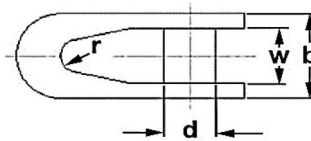
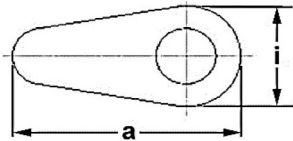


Galvanized shackle to connect fibre and steel wire rope



Art. 3000 T Z



* Reference standard	Industrial standard
* Type of steel	Pin: C 45 UNI EN 10083-1 - W.N. 1.1191 steel or 35CrMo Aisi 4135 - W.N. 1.7220 steel Body: G28Mn6 EN 10293 - W.N. 1.1165 steel or 35CrMo Aisi 4135 - W.N. 1.7220 steel
* Design factor:	3 : 1
* Standard surface finish	Electric galvanization
* Applications	Connection between fibre and steel wire rope in marine mooring
* Technical features	The rounded shape of body and the large diameter pin prolongate the service life of ropes
* Warnings	Please refer to the technical part of shackles section for deepening and other warnings
* Remark	Not for lifting applications!



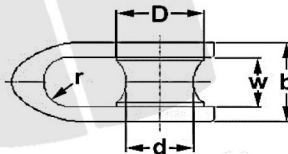
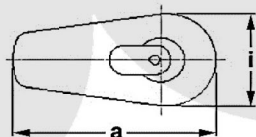
Technical data									
code	breaking load t*	WLL t*	measures in mm						weight each approx. kg
			pin d	radius r	opening w	outer measurements			
						thicknss b	length a	width i	
FVTONS090	90	30	65	22	75	119	285	136	12,6
FVTONS120	120	40	75	28	90	142	325	150	21,2
FVTONS180	180	60	85	30	120	190	340	160	29

* metric tons of 1.000 kg The sizes in bold character are normally ex stock available.

Stainless shackle to connect fibre and steel wire rope



Art. 3000 M I



* Reference standard	Industrial standard
* Type of steel	Stainless steel Aisi 304 (X5CrNi18-10) - W.N. 1.4301 or Aisi 420 (X20Cr3) - W.N. 1.4021
* Design factor:	3 : 1
* Standard surface finish	Polishing
* Applications	Connection between fibre and steel wire rope in marine mooring
* Technical features	The rounded shape of body and the large diameter pin prolongate the service life of ropes
* Warnings	Please refer to the technical part of shackles section for deepening and other warnings
* Remark	Not for lifting applications!



Technical data										
code	breaking load t*	WLL t*	measures in mm							weight each approx. kg
			sheave diameter		radius r	opening w	outer measurements			
			inner d	outer D			thicknss b	length a	width i	
FVMAND070	70	25	72	95	33	62	106	240	115	10
FVMAND090	90	30	85	110	34	67	108	255	126	11,1
FVMAND120	120	40	87	120	47,5	90	137	310	140	19,1
FVMAND165	165	55	110	150	56	113	165	366	160	30,2
FVMAND180	180	60	112	160	65	120	180	385	170	41

* metric tons of 1.000 kg The sizes in bold character are normally ex stock available.