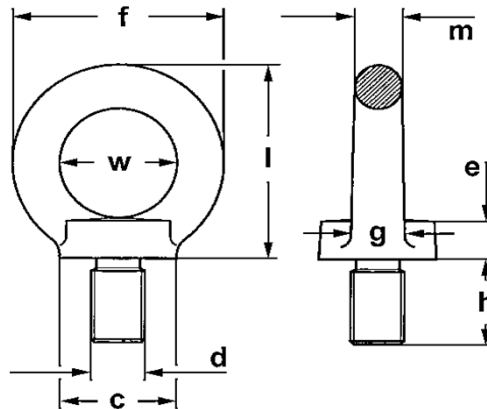


## Eyebolt according to DIN 580:2010 inch thread Whitworth/UNC - art. 2947/P



* Threads	Except size 1/2", in which the no. of threads per inch varies, Whitworth (English coarse) and UNC (American coarse) are interchangeable
* Reference standard	Industrial standard, generally complying to DIN 580
* Type of steel	C15 UNI EN 10084 steel - W.N. 1.0401 - class 4
* Design factor (F.O.S.)	4 : 1
* Standard finish	Self-coloured; electro or hot dip galvanized upon request
* Applications	Lifting and suspending of loads in industry and marine
* Notes	Intermediate and larger sizes, UNF (American fine) thread and other threads available upon
* Warnings	Working temperature -20° +200° C - please refer to the technical part of attachment section for deepening and other warnings

Dimensional tolerances: eye width +/- 1 mm

### Technical data

code		size	WLL t <sup>(1)</sup>		measures mm										approx. weight/ piece kgs
Whitworth	UNC		along the axe	at 45° <sup>(2)</sup>	thread dia. d	threads per inch	width w	width f	dia. c	thickness e	m	dia. g	height i	h	
<b>GLMASW006</b>	GLMASU006	6	0,09	0,06	1/4	20	20	36	20	6	8	10	36	13	0,06
<b>GLMASW008</b>	GLMASU008	8	0,14	0,1	5/16	18	20	36	20	6	8	10	36	13	0,06
GLMASW010	<b>GLMASU010</b>	10	0,23	0,17	3/8	16	25	45	25	8	10	12	45	17	0,11
GLMASW011	GLMASU011	12	0,23	0,17	7/16	14	30	54	30	10	12	14	53	20,5	0,16
<b>GLMASW012</b>	<b>GLMASU013</b>	12	0,34	0,24	1/2	12 <sup>(3)</sup>	30	54	30	10	12	14	53	20,5	0,17
GLMASW014	GLMASU014	12	0,34	0,24	9/16	12	30	54	30	10	12	14	53	20,5	0,17
GLMASW016	<b>GLMASU016</b>	16	0,7	0,5	5/8	11	35	63	35	12	14	16	62	27	0,31
GLMASW020	<b>GLMASU019</b>	20	1,2	0,86	3/4	10	40	72	40	14	16	19	71	30	0,48
GLMASW022	<b>GLMASU022</b>	24	1,5	1,05	7/8	9	40	72	40	14	16	19	71	30	0,48
GLMASW024	<b>GLMASU025</b>	24	1,8	1,29	1	8	50	90	50	18	20	24	90	36	1
<b>GLMASW030</b>	GLMASU030	30	3,2	2,3	1.1/8	7	54	98	62	20	22	26	99	40	1,25
GLMASW033	<b>GLMASU032</b>	36	3,2	2,3	1.1/4	7	60	108	65	22	24	28	109	45	2
GLMASW036	GLMASU036	36	4,6	3,3	1.3/8	6	60	108	65	22	24	28	109	45	2,05
GLMASW039	<b>GLMASU038</b>	42	4,6	3,3	1.1/2	6	60	108	65	22	24	28	109	45	1,9
GLMASW042	GLMASU042	42	6,3	4,5	1.5/8	6	80	144	85	30	32	38	147	63	4,15
GLMASW045	GLMASU045	48	6,3	4,5	1.3/4	5	90	166	100	35	38	46	168	68	6,1
GLMASW050	GLMASU050	48	8,6	6,1	2	4,5	100	184	110	38	42	50	187	78	8,6
GLMASW056	GLMASU056	56	11,5	8,2	2.1/4	4,5	100	184	110	38	42	50	187	78	8,8
GLMASW063	GLMASU063	64	16	11	2.1/2	4	110	106	120	42	48	58	208	90	12,4
GLMASW070	GLMASU070	72	20	14	2.3/4	4	140	260	150	50	60	72	260	100	22,5
GLMASW076	GLMASU076	72	20	14	3	4	140	260	150	50	60	72	260	100	22,5

<sup>(1)</sup> metric tons = 1.000 kg

<sup>(2)</sup> maximum side load, permitted only along the eyes' plan

<sup>(3)</sup> UNC thread: 13 threads per inch

The sizes in bold character are stock-items.