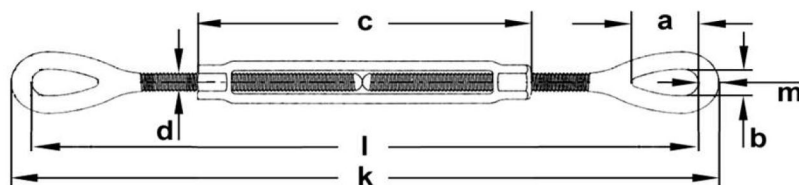
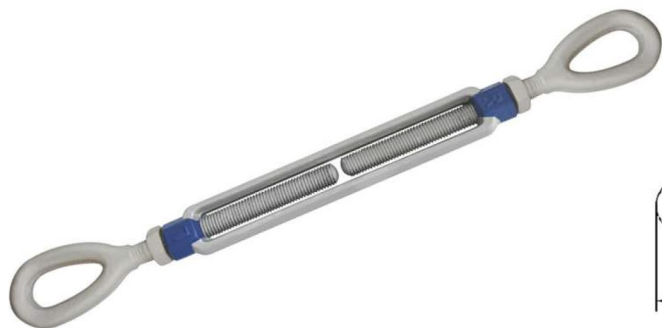


## High carbon turnbuckle eye/eye - art. 2260



* Reference standard	Industrial standard generally complying to ASTM F1145-92 (formerly FF-T-791b)
* Type of steel	High carbon steel C 45 UNI EN 10083-1 - W.N. 1.1191 - class 5
* Design factor (F.O.S.)	5 : 1
* Standard surface finish	Hot dip galvanized, hexagonal heads of body blue RAL 5017 painted
* Technical features	High WLL with small dimensions and weight - up to four take-up lengths for thread size - standard supplied with locking nuts
* Applications	Lifting, suspension and lashing of loads in industry and marine
* Warnings	WLL apply for pull along the turnbuckle's axe - working temperature -20° to +200° C - please refer to the technical part of rigging screw section for deepening and other warnings

### Technical data

code	inch		WLL t <sup>(1)</sup>	measures mm									approx. weight per pc. kg
	thread d	nominal take-up		usable length l			outer length k		length c	opening b	depth a	dia. m	
				closed	open	half open	closed	open					
<b>TG2261006</b>	3/8	6	0,54	292	428	360	312	448	183	13	29	10	0,47
<b>TG2261306</b>	1/2	6	1	325	455	390	349	479	193	18	36	12	0,84
<b>TG2261309</b>	1/2	9	1	400	607	504	424	631	269	18	36	12	1,05
TG2261312	1/2	12	1	476	760	618	500	784	346	18	36	12	1,26
<b>TG2261606</b>	5/8	6	1,59	381	503	442	409	531	203	21	44	14	1,35
<b>TG2261609</b>	5/8	9	1,59	455	655	555	483	683	279	21	44	14	1,6
<b>TG2261612</b>	5/8	12	1,59	531	808	670	559	836	356	21	44	14	1,92
<b>TG2261906</b>	3/4	6	2,36	414	532	473	448	566	213	25	54	17	2,03
<b>TG2291909</b>	3/4	9	2,36	488	684	586	522	718	289	25	54	17	2,49
<b>TG2261912</b>	3/4	12	2,36	564	837	701	598	871	366	25	54	17	2,65
<b>TG2261918</b>	3/4	18	2,36	717	1142	930	751	1176	518	25	54	17	3,06
<b>TG2262212</b>	7/8	12	3,27	601	869	735	641	909	376	32	61	20	3,98
<b>TG2262218</b>	7/8	18	3,27	754	1174	964	794	1214	528	32	61	20	5,12
<b>TG2262506</b>	1	6	4,54	497	604	551	545	652	233	36	75	24	4,35
<b>TG2262512</b>	1	12	4,54	647	909	778	695	957	386	36	75	24	5,92
<b>TG2262518</b>	1	18	4,54	800	1124	962	848	1172	538	36	75	24	7,17
TG2262524	1	24	4,54	950	1517	1234	998	1565	690	36	75	24	7,52
<b>TG2263212</b>	1.1/4	12	6,9	711	984	848	771	1044	385	46	90	30	9,8
<b>TG2263218</b>	1.1/4	18	6,9	861	1286	1074	921	1346	537	46	90	30	11,31
TG2263224	1.1/4	24	6,9	1014	1590	1302	1074	1650	689	46	90	30	12,1
<b>TG2263812</b>	1.1/2	12	9,71	756	1023	890	820	1087	401	54	105	32	14,2
<b>TG2263818</b>	1.1/2	18	9,71	916	1335	1126	980	1399	553	54	105	32	16,5
TG2263824	1.1/2	24	9,71	1065	1635	1350	1129	1699	705	54	105	32	17,1
<b>TG2264518</b>	1.3/4	18	12,7	1019	1396	1208	1095	1472	577	60	119	38	23,1
TG2264524	1.3/4	24	12,7	1171	1701	1436	1247	1777	729	60	119	38	26,3
TG2265024	2	24	16,78	1264	1783	1524	1356	1875	746	69	147	46	40,7
TG2266324	2.1/2	24	27,22	1429	1965	1697	1531	2067	800	80	165	51	64
TG2267024	2.3/4	24	34,02	1503	2038	1771	1617	2152	800	84	178	57	88

<sup>(1)</sup> metric tons of 1.000 kgs

The sizes in bold character are stock-items.