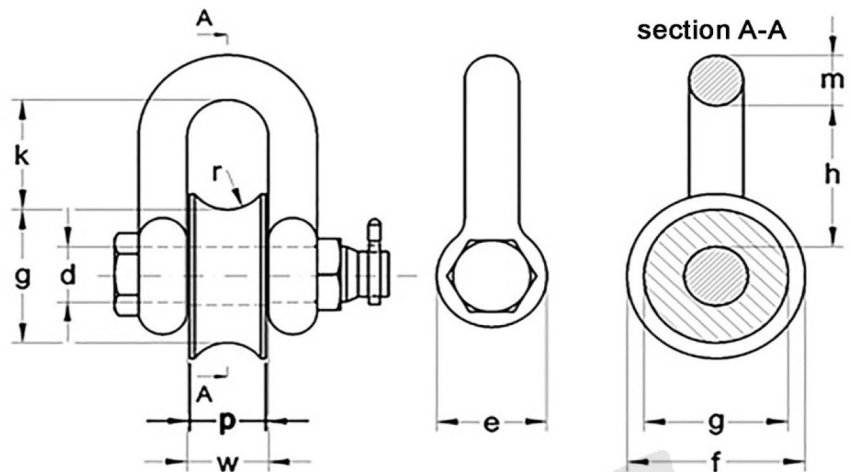


## Shackle with pulley (roller shackle) - art. 1181



* Reference standard	Industrial standard
* Type of steel	Body: low carbon steel Pin and pulley: C 45 UNI EN 10083-1 W.N. 1.0503 steel (or alike)
* Design factor (F.O.S.)	4 : 1
* Standard finish	Body, nut and splitpin: electro galvanized Pin and pulley: zinc sprayed
* Applications	Connection between steel wire and fibre rope in marine
* Warnings	The steel wire rope should lie on body, the fibre rope on pulley
* Remarks	<b>Use for lifting is forbidden!</b>



Dimensional tolerances	
body dia. m	+/- 3 mm
pin dia. d	+/- 3 mm
opening w	+/-10 mm
height h	+/-10 mm

Technical data											
code	WLL <sup>(1)</sup>	measures mm									approx. weight per pc. kg
		body dia. m	pin dia. d	inside width w	total height h	thickness e	outer dia. f	throat dia. g	width p	usable height k	
FVGRROL25	2,5	25	25	45	87	50	70	53	42	61	2,56
FVGRROL28	3,15	28	28	50	115	56	80	58	46	86	3,86
FVGRROL32	4	32	32	57	127	64	90	63	53	96	4,9
FVGRROL38	5	38	39	70	129	78	100	74	70	92	9,65

<sup>(1)</sup> metric tons of 1.000 kgs

The sizes in bold character are stock-items.